

## 試驗報告

## Test Report

號碼(No.) : KA/2017/80454 日期(Date) : 2017/08/14

頁數 (Page) : 1 of 10

信宇科技股份有限公司

SIN YU TECHNOLOGY INC.

744臺南市新市區潭頂里115號

NO.115,TANDING, XINSHI DIST.,TAINAN CITY, 744 TAIWAN,R.O.C.

以下測試樣品係由申請廠商所提供及確認

(The following sample(s) was/were submitted and identified by/on behalf of the applicant as) :

樣品名稱(Sample Description) : 聚氯乙烯外被多芯纜線 (PVC JACKED MULTI-CONDUCTOR WIRE)  
收件日期(Sample Receiving Date) : 2017/08/07  
測試期間(Testing Period) : 2017/08/07 TO 2017/08/14  
送樣廠商(Sample Submitted By) : 信宇科技股份有限公司 (SIN YU TECHNOLOGY INC.)

測試結果(Test Results) : 請見下一頁 (Please refer to next pages).

  
報告簽署人/Ray Chang, Ph.D./Manager - Tech  
Signed for and on behalf of  
SGS Taiwan Limited



# 試驗報告

號碼(No.) : KA/2017/80454 日期(Date) : 2017/08/14

頁數 (Page) : 2 of 10

## Test Report

信宇科技股份有限公司

SIN YU TECHNOLOGY INC.

744臺南市新市區潭頂里115號

NO.115,TANDING, XINSHI DIST.,TAINAN CITY, 744 TAIWAN,R.O.C.

### 測試結果(Test Results)

- 測試部位(PART NAME)No.1 : 黑色 電纜外被 (BLACK JACKET)
- 測試部位(PART NAME)No.2 : 混測:紅+藍+綠色電線外被 (MIXED ALL PART:RED+BLUE+GREEN COLORED INSULATIONS)
- 測試部位(PART NAME)No.2 : 銀色 金屬線 (SILVER COLORED WIRE)

測試項目 (Test Items)	單位 (Unit)	測試方法 (Method)	方法偵測 極限值 (MDL)	結果 (Result)		
				No.1	No.2	No.3
鎘 / Cadmium (Cd)	mg/kg	參考IEC 62321-5: 2013方法, 以感應耦合電漿原子發射光譜儀檢測. / With reference to IEC 62321-5: 2013 and performed by ICP-AES.	2	n.d.	n.d.	n.d.
鉛 / Lead (Pb)	mg/kg	參考IEC 62321-5: 2013方法, 以感應耦合電漿原子發射光譜儀檢測. / With reference to IEC 62321-5: 2013 and performed by ICP-AES.	2	n.d.	n.d.	n.d.
汞 / Mercury (Hg)	mg/kg	參考IEC 62321-4: 2013方法, 以感應耦合電漿原子發射光譜儀檢測. / With reference to IEC 62321-4: 2013 and performed by ICP-AES.	2	n.d.	n.d.	n.d.
六價鉻 / Hexavalent Chromium Cr(VI)	mg/kg	參考IEC 62321-7-2:2017, 以UV-VIS檢測. / With reference to IEC 62321-7-2:2017 and performed by UV-VIS.	8	n.d.	n.d.	---
六價鉻 / Hexavalent Chromium Cr(VI)(#2)	µg/cm <sup>2</sup>	參考IEC 62321-7-1:2015, 以UV-VIS檢測. / With reference to IEC 62321-7-1:2015 and performed by UV-VIS.	0.10	---	---	n.d.

Unless otherwise stated the results shown in this test report refer only to the sample(s) tested. This test report cannot be reproduced, except in full, without prior written permission of the Company. 除非另有說明, 此報告結果僅對測試之樣品負責。本報告未經本公司書面許可, 不可部分複製。  
This document is issued by the Company subject to its General Conditions of Service printed overleaf, available on request or accessible at [www.sgs.com/terms\\_and\\_conditions.htm](http://www.sgs.com/terms_and_conditions.htm) and, for electronic format documents, subject to Terms and Conditions for Electronic Documents at [www.sgs.com/terms\\_e-document.htm](http://www.sgs.com/terms_e-document.htm). Attention is drawn to the limitation of liability, indemnification and jurisdiction issues defined therein. Any holder of this document is advised that information contained hereon reflects the Company's findings at the time of its intervention only and within the limits of Client's instructions, if any. The Company's sole responsibility is to its Client and this document does not exonerate parties to a transaction from exercising all their rights and obligations under the transaction documents. This document cannot be reproduced except in full, without prior written approval of the Company. Any unauthorized alteration, forgery or falsification of the content or appearance of this document is unlawful and offenders may be prosecuted to the fullest extent of the law.

# 試驗報告

號碼(No.) : KA/2017/80454 日期(Date) : 2017/08/14

頁數 (Page) : 3 of 10

# Test Report

信宇科技股份有限公司

SIN YU TECHNOLOGY INC.

744臺南市新市區潭頂里115號

NO.115,TANDING, XINSHI DIST.,TAINAN CITY, 744 TAIWAN,R.O.C.

測試項目 (Test Items)	單位 (Unit)	測試方法 (Method)	方法偵測 極限值 (MDL)	結果 (Result)		
				No.1	No.2	No.3
<b>多溴聯苯總和 / Sum of PBBs</b>	mg/kg	參考IEC 62321-6: 2015方法, 以氣相層析/質譜儀檢測。/ With reference to IEC 62321-6: 2015 and performed by GC/MS.	-	n.d.	n.d.	---
一溴聯苯 / Monobromobiphenyl	mg/kg		5	n.d.	n.d.	---
二溴聯苯 / Dibromobiphenyl	mg/kg		5	n.d.	n.d.	---
三溴聯苯 / Tribromobiphenyl	mg/kg		5	n.d.	n.d.	---
四溴聯苯 / Tetrabromobiphenyl	mg/kg		5	n.d.	n.d.	---
五溴聯苯 / Pentabromobiphenyl	mg/kg		5	n.d.	n.d.	---
六溴聯苯 / Hexabromobiphenyl	mg/kg		5	n.d.	n.d.	---
七溴聯苯 / Heptabromobiphenyl	mg/kg		5	n.d.	n.d.	---
八溴聯苯 / Octabromobiphenyl	mg/kg		5	n.d.	n.d.	---
九溴聯苯 / Nonabromobiphenyl	mg/kg		5	n.d.	n.d.	---
十溴聯苯 / Decabromobiphenyl	mg/kg		5	n.d.	n.d.	---
<b>多溴聯苯醚總和 / Sum of PBDEs</b>	mg/kg	參考IEC 62321-6: 2015方法, 以氣相層析/質譜儀檢測。/ With reference to IEC 62321-6: 2015 and performed by GC/MS.	-	n.d.	n.d.	---
一溴聯苯醚 / Monobromodiphenyl ether	mg/kg		5	n.d.	n.d.	---
二溴聯苯醚 / Dibromodiphenyl ether	mg/kg		5	n.d.	n.d.	---
三溴聯苯醚 / Tribromodiphenyl ether	mg/kg		5	n.d.	n.d.	---
四溴聯苯醚 / Tetrabromodiphenyl ether	mg/kg		5	n.d.	n.d.	---
五溴聯苯醚 / Pentabromodiphenyl ether	mg/kg		5	n.d.	n.d.	---
六溴聯苯醚 / Hexabromodiphenyl ether	mg/kg		5	n.d.	n.d.	---
七溴聯苯醚 / Heptabromodiphenyl ether	mg/kg		5	n.d.	n.d.	---
八溴聯苯醚 / Octabromodiphenyl ether	mg/kg		5	n.d.	n.d.	---
九溴聯苯醚 / Nonabromodiphenyl ether	mg/kg		5	n.d.	n.d.	---
十溴聯苯醚 / Decabromodiphenyl ether	mg/kg	5	n.d.	n.d.	---	

Unless otherwise stated the results shown in this test report refer only to the sample(s) tested. This test report cannot be reproduced, except in full, without prior written permission of the Company. 除非另有說明，此報告結果僅對測試之樣品負責。本報告未經本公司書面許可，不可部分複製。  
This document is issued by the Company subject to its General Conditions of Service printed overleaf, available on request or accessible at [www.sgs.com/terms\\_and\\_conditions.htm](http://www.sgs.com/terms_and_conditions.htm) and, for electronic format documents, subject to Terms and Conditions for Electronic Documents at [www.sgs.com/terms\\_e-document.htm](http://www.sgs.com/terms_e-document.htm). Attention is drawn to the limitation of liability, indemnification and jurisdiction issues defined therein. Any holder of this document is advised that information contained hereon reflects the Company's findings at the time of its intervention only and within the limits of Client's instructions, if any. The Company's sole responsibility is to its Client and this document does not exonerate parties to a transaction from exercising all their rights and obligations under the transaction documents. This document cannot be reproduced except in full, without prior written approval of the Company. Any unauthorized alteration, forgery or falsification of the content or appearance of this document is unlawful and offenders may be prosecuted to the fullest extent of the law.

# 試驗報告

號碼(No.) : KA/2017/80454 日期(Date) : 2017/08/14

頁數 (Page) : 4 of 10

## Test Report

信宇科技股份有限公司  
SIN YU TECHNOLOGY INC.

744臺南市新市區潭頂里115號

NO.115,TANDING, XINSHI DIST.,TAINAN CITY, 744 TAIWAN,R.O.C.

測試項目 (Test Items)	單位 (Unit)	測試方法 (Method)	方法偵測 極限值 (MDL)	結果 (Result)		
				No.1	No.2	No.3
鄰苯二甲酸二異丁酯 / DIBP (Di-isobutyl phthalate) (CAS No.: 84-69-5)	mg/kg	參考IEC 62321-8:2017, 以氣相層析儀/質譜儀檢測。 / With reference to IEC 62321-8:2017. Analysis was performed by GC/MS.	50	n.d.	n.d.	---
鄰苯二甲酸二丁酯 / DBP (Dibutyl phthalate) (CAS No.: 84-74-2)	mg/kg	參考IEC 62321-8:2017, 以氣相層析儀/質譜儀檢測。 / With reference to IEC 62321-8:2017. Analysis was performed by GC/MS.	50	n.d.	83.9	---
鄰苯二甲酸丁苯甲酯 / BBP (Butyl Benzyl phthalate) (CAS No.: 85-68-7)	mg/kg	參考IEC 62321-8:2017, 以氣相層析儀/質譜儀檢測。 / With reference to IEC 62321-8:2017. Analysis was performed by GC/MS.	50	n.d.	n.d.	---
鄰苯二甲酸二(2-乙基己基)酯 / DEHP (Di-(2-ethylhexyl) phthalate) (CAS No.: 117-81-7)	mg/kg	參考IEC 62321-8:2017, 以氣相層析儀/質譜儀檢測。 / With reference to IEC 62321-8:2017. Analysis was performed by GC/MS.	50	118	201	---

Unless otherwise stated the results shown in this test report refer only to the sample(s) tested. This test report cannot be reproduced, except in full, without prior written permission of the Company. 除非另有說明，此報告結果僅對測試之樣品負責。本報告未經本公司書面許可，不可部分複製。  
This document is issued by the Company subject to its General Conditions of Service printed overleaf, available on request or accessible at [www.sgs.com/terms\\_and\\_conditions.htm](http://www.sgs.com/terms_and_conditions.htm) and, for electronic format documents, subject to Terms and Conditions for Electronic Documents at [www.sgs.com/terms\\_e-document.htm](http://www.sgs.com/terms_e-document.htm). Attention is drawn to the limitation of liability, indemnification and jurisdiction issues defined therein. Any holder of this document is advised that information contained hereon reflects the Company's findings at the time of its intervention only and within the limits of Client's instructions, if any. The Company's sole responsibility is to its Client and this document does not exonerate parties to a transaction from exercising all their rights and obligations under the transaction documents. This document cannot be reproduced except in full, without prior written approval of the Company. Any unauthorized alteration, forgery or falsification of the content or appearance of this document is unlawful and offenders may be prosecuted to the fullest extent of the law.

## 試驗報告

## Test Report

號碼(No.) : KA/2017/80454 日期(Date) : 2017/08/14

頁數 (Page) : 5 of 10

信宇科技股份有限公司  
SIN YU TECHNOLOGY INC.

744臺南市新市區潭頂里115號

NO.115,TANDING, XINSHI DIST.,TAINAN CITY, 744 TAIWAN,R.O.C.

### 備註(Note) :

1. mg/kg = ppm ; 0.1wt% = 1000ppm
2. n.d. = Not Detected (未檢出)
3. MDL = Method Detection Limit (方法偵測極限值)
4. "-" = Not Regulated (無規格值)
5. "---" = Not Conducted (未測項目)
6. \*\* = Qualitative analysis (No Unit) 定性分析(無單位)
7. #2) =
  - a. 當六價鉻結果大於 $0.13 \mu\text{g}/\text{cm}^2$ ，表示樣品表層含有六價鉻。 / The sample is positive for Cr(VI) if the Cr(VI) concentration is greater than  $0.13 \mu\text{g}/\text{cm}^2$ . The sample coating is considered to contain Cr(VI).
  - b. 當六價鉻結果為n.d. (濃度小於 $0.10 \mu\text{g}/\text{cm}^2$ )，表示表層不含六價鉻。 / The sample is negative for Cr(VI) if Cr(VI) is n.d. (concentration less than  $0.10 \mu\text{g}/\text{cm}^2$ ). The coating is considered a non-Cr(VI) based coating
  - c. 當六價鉻結果介於  $0.10$  及  $0.13 \mu\text{g}/\text{cm}^2$  時，無法確定塗層是否含有六價鉻。 / The result between  $0.10 \mu\text{g}/\text{cm}^2$  and  $0.13 \mu\text{g}/\text{cm}^2$  is considered to be inconclusive - unavoidable coating variations may influence the determination.
8. 樣品的測試是基於申請人要求混合測試，報告中的混合測試結果不代表其中個別單一材質的含量。  
(The samples was/were analyzed on behalf of the applicant as mixing sample in one testing.  
The above results was/were only given as the informality value.)

## 試驗報告

號碼(No.) : KA/2017/80454 日期(Date) : 2017/08/14

頁數 (Page) : 6 of 10

## Test Report

信宇科技股份有限公司

SIN YU TECHNOLOGY INC.

744臺南市新市區潭頂里115號

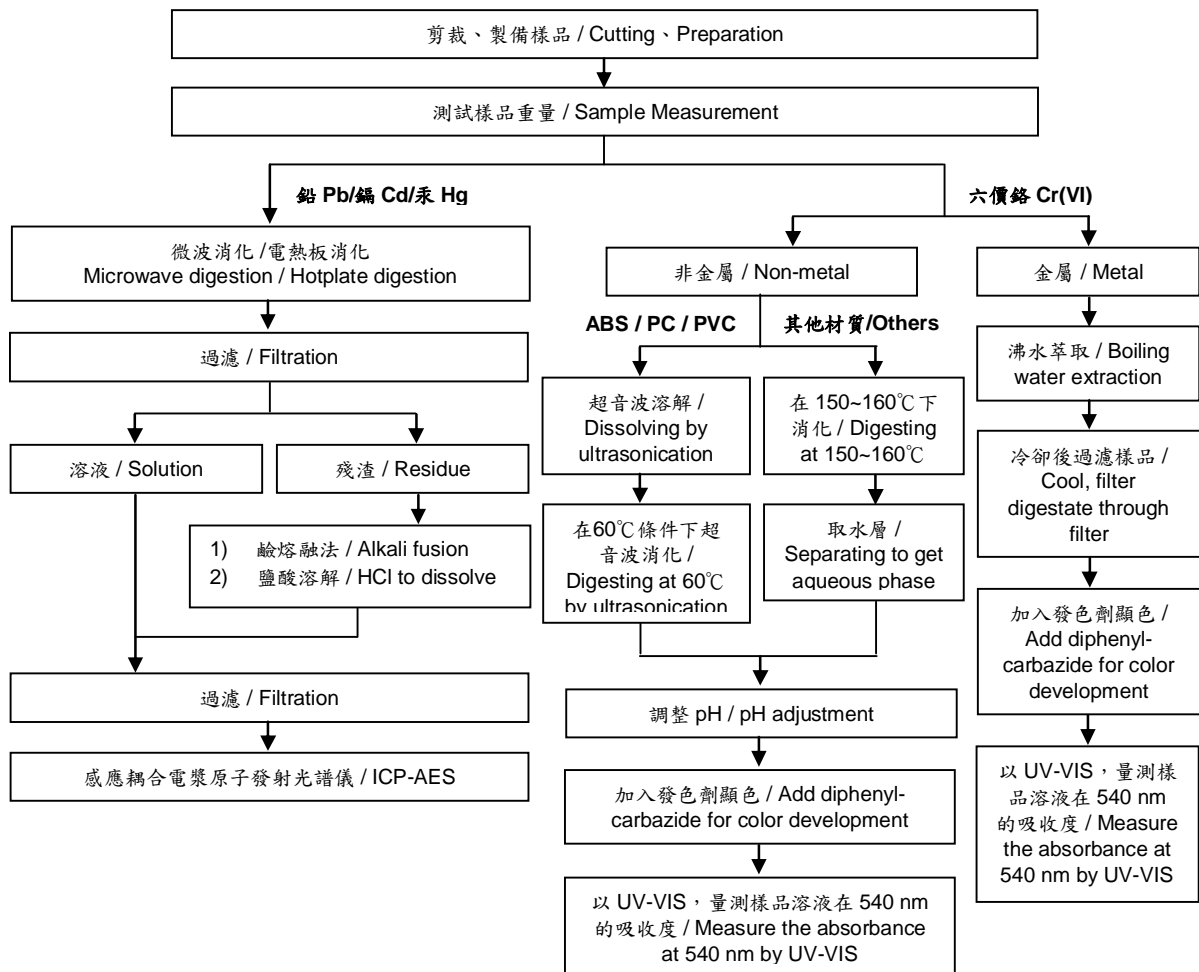
NO.115,TANDING, XINSHI DIST.,TAINAN CITY, 744 TAIWAN,R.O.C.

### 重金屬流程圖 / Analytical flow chart of Heavy Metal

根據以下的流程圖之條件，樣品已完全溶解。(六價鉻測試方法除外)

These samples were dissolved totally by pre-conditioning method according to below flow chart. (Cr<sup>6+</sup> test method excluded)

- 測試人員：劉俊宏 / Technician : Jony Liu
- 測試負責人：張伯睿 / Supervisor: Ray Chang



Unless otherwise stated the results shown in this test report refer only to the sample(s) tested. This test report cannot be reproduced, except in full, without prior written permission of the Company. 除非另有說明，此報告結果僅對測試之樣品負責。本報告未經本公司書面許可，不可部分複製。 This document is issued by the Company subject to its General Conditions of Service printed overleaf, available on request or accessible at [www.sgs.com/terms\\_and\\_conditions.htm](http://www.sgs.com/terms_and_conditions.htm) and, for electronic format documents, subject to Terms and Conditions for Electronic Documents at [www.sgs.com/terms\\_e-document.htm](http://www.sgs.com/terms_e-document.htm). Attention is drawn to the limitation of liability, indemnification and jurisdiction issues defined therein. Any holder of this document is advised that information contained hereon reflects the Company's findings at the time of its intervention only and within the limits of Client's instructions, if any. The Company's sole responsibility is to its Client and this document does not exonerate parties to a transaction from exercising all their rights and obligations under the transaction documents. This document cannot be reproduced except in full, without prior written approval of the Company. Any unauthorized alteration, forgery or falsification of the content or appearance of this document is unlawful and offenders may be prosecuted to the fullest extent of the law.

## 試驗報告

## Test Report

號碼(No.) : KA/2017/80454 日期(Date) : 2017/08/14

頁數 (Page) : 7 of 10

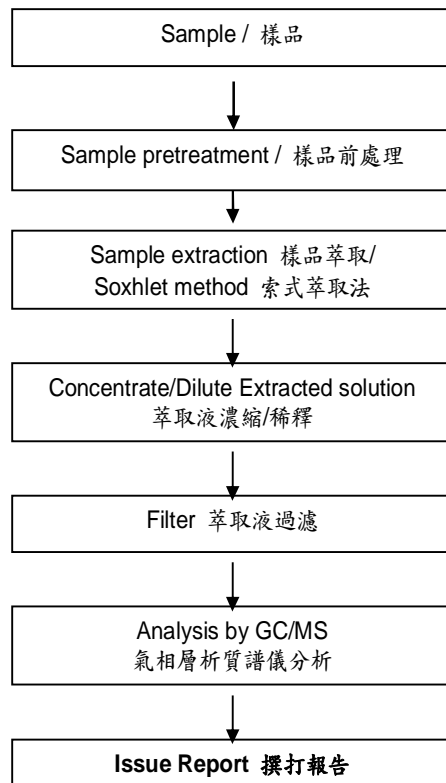
信宇科技股份有限公司  
SIN YU TECHNOLOGY INC.

744臺南市新市區潭頂里115號

NO.115,TANDING, XINSHI DIST.,TAINAN CITY, 744 TAIWAN,R.O.C.

### 多溴聯苯/多溴聯苯醌 分析流程圖 / PBB/PBDE analytical FLOW CHART

- 1)測試人員：陳威錚 / Name of the person who made measurement: Dorothy Chen  
2)測試負責人：張伯睿 / Name of the person in charge of measurement: Ray Chang



Unless otherwise stated the results shown in this test report refer only to the sample(s) tested. This test report cannot be reproduced, except in full, without prior written permission of the Company. 除非另有說明，此報告結果僅對測試之樣品負責。本報告未經本公司書面許可，不可部分複製。  
This document is issued by the Company subject to its General Conditions of Service printed overleaf, available on request or accessible at [www.sgs.com/terms\\_and\\_conditions.htm](http://www.sgs.com/terms_and_conditions.htm) and, for electronic format documents, subject to Terms and Conditions for Electronic Documents at [www.sgs.com/terms\\_e-document.htm](http://www.sgs.com/terms_e-document.htm). Attention is drawn to the limitation of liability, indemnification and jurisdiction issues defined therein. Any holder of this document is advised that information contained hereon reflects the Company's findings at the time of its intervention only and within the limits of Client's instructions, if any. The Company's sole responsibility is to its Client and this document does not exonerate parties to a transaction from exercising all their rights and obligations under the transaction documents. This document cannot be reproduced except in full, without prior written approval of the Company. Any unauthorized alteration, forgery or falsification of the content or appearance of this document is unlawful and offenders may be prosecuted to the fullest extent of the law.

## 試驗報告

## Test Report

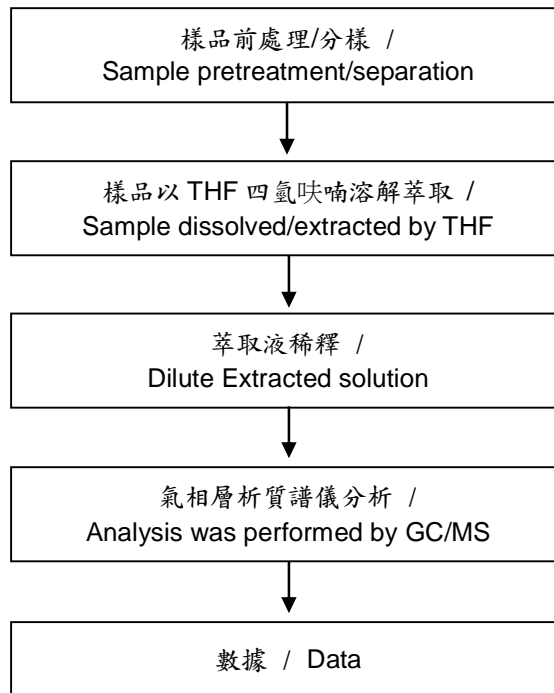
號碼(No.) : KA/2017/80454 日期(Date) : 2017/08/14

頁數 (Page) : 8 of 10

信宇科技股份有限公司  
SIN YU TECHNOLOGY INC.  
744臺南市新市區潭頂里115號  
NO.115,TANDING, XINSHI DIST.,TAINAN CITY, 744 TAIWAN,R.O.C.

### 可塑劑分析流程圖 / Analytical flow chart of phthalate content

- 測試人員：陳威錚 / Name of the person who made measurement: Dorothy Chen
- 測試負責人：張伯睿 / Name of the person in charge of measurement: Ray Chang



Unless otherwise stated the results shown in this test report refer only to the sample(s) tested. This test report cannot be reproduced, except in full, without prior written permission of the Company. 除非另有說明，此報告結果僅對測試之樣品負責。本報告未經本公司書面許可，不可部分複製。  
This document is issued by the Company subject to its General Conditions of Service printed overleaf, available on request or accessible at [www.sgs.com/terms\\_and\\_conditions.htm](http://www.sgs.com/terms_and_conditions.htm) and, for electronic format documents, subject to Terms and Conditions for Electronic Documents at [www.sgs.com/terms\\_e-document.htm](http://www.sgs.com/terms_e-document.htm). Attention is drawn to the limitation of liability, indemnification and jurisdiction issues defined therein. Any holder of this document is advised that information contained hereon reflects the Company's findings at the time of its intervention only and within the limits of Client's instructions, if any. The Company's sole responsibility is to its Client and this document does not exonerate parties to a transaction from exercising all their rights and obligations under the transaction documents. This document cannot be reproduced except in full, without prior written approval of the Company. Any unauthorized alteration, forgery or falsification of the content or appearance of this document is unlawful and offenders may be prosecuted to the fullest extent of the law.



## 試驗報告

## Test Report

號碼(No.) : KA/2017/80454 日期(Date) : 2017/08/14

頁數 (Page) : 9 of 10

信宇科技股份有限公司

SIN YU TECHNOLOGY INC.

744臺南市新市區潭頂里115號

NO.115,TANDING, XINSHI DIST.,TAINAN CITY, 744 TAIWAN,R.O.C.

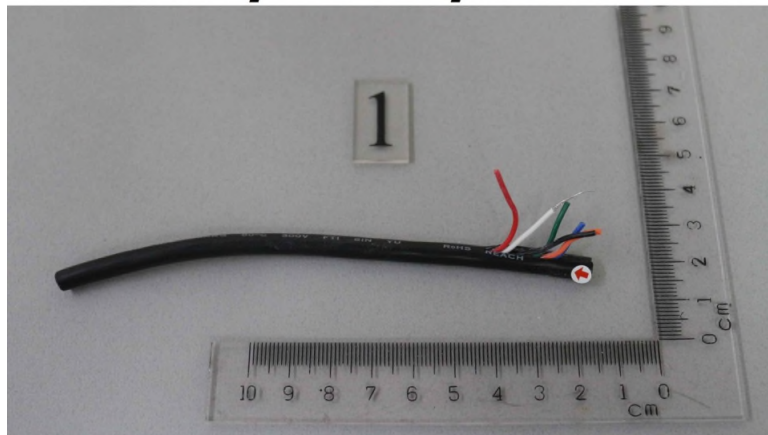
\* 照片中如有箭頭標示，則表示為實際檢測之樣品/部位。\*

(The tested sample / part is marked by an arrow if it's shown on the photo.)

### KA/2017/80454



### KA/2017/80454



Unless otherwise stated the results shown in this test report refer only to the sample(s) tested. This test report cannot be reproduced, except in full, without prior written permission of the Company. 除非另有說明，此報告結果僅對測試之樣品負責。本報告未經本公司書面許可，不可部分複製。  
This document is issued by the Company subject to its General Conditions of Service printed overleaf, available on request or accessible at [www.sgs.com/terms\\_and\\_conditions.htm](http://www.sgs.com/terms_and_conditions.htm) and, for electronic format documents, subject to Terms and Conditions for Electronic Documents at [www.sgs.com/terms\\_e-document.htm](http://www.sgs.com/terms_e-document.htm). Attention is drawn to the limitation of liability, indemnification and jurisdiction issues defined therein. Any holder of this document is advised that information contained hereon reflects the Company's findings at the time of its intervention only and within the limits of Client's instructions, if any. The Company's sole responsibility is to its Client and this document does not exonerate parties to a transaction from exercising all their rights and obligations under the transaction documents. This document cannot be reproduced except in full, without prior written approval of the Company. Any unauthorized alteration, forgery or falsification of the content or appearance of this document is unlawful and offenders may be prosecuted to the fullest extent of the law.

## 試驗報告

## Test Report

號碼(No.) : KA/2017/80454 日期(Date) : 2017/08/14

頁數 (Page) : 10 of 10

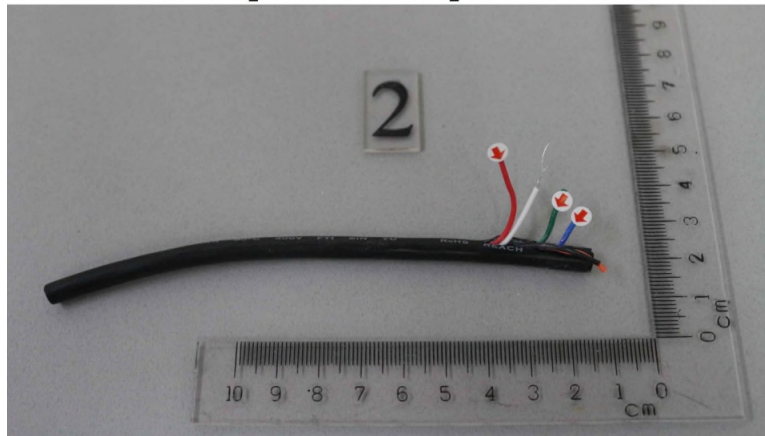
信宇科技股份有限公司

SIN YU TECHNOLOGY INC.

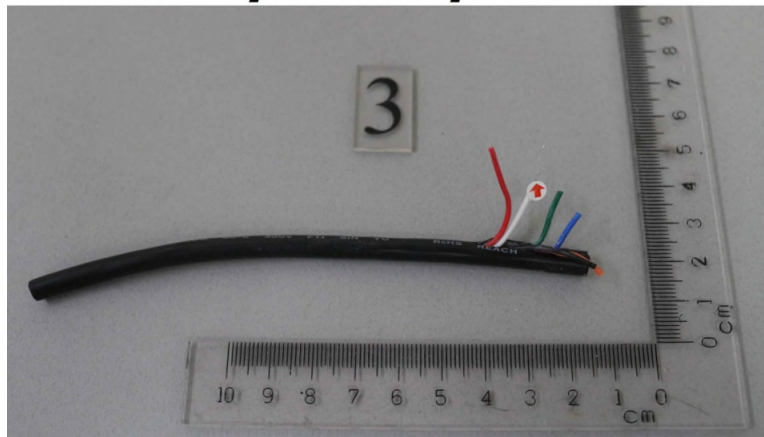
744臺南市新市區潭頂里115號

NO.115,TANDING, XINSHI DIST.,TAINAN CITY, 744 TAIWAN,R.O.C.

### KA/2017/80454



### KA/2017/80454



\*\* 報告結尾 (End of Report) \*\*

Unless otherwise stated the results shown in this test report refer only to the sample(s) tested. This test report cannot be reproduced, except in full, without prior written permission of the Company. 除非另有說明，此報告結果僅對測試之樣品負責。本報告未經本公司書面許可，不可部分複製。  
This document is issued by the Company subject to its General Conditions of Service printed overleaf, available on request or accessible at [www.sgs.com/terms\\_and\\_conditions.htm](http://www.sgs.com/terms_and_conditions.htm) and, for electronic format documents, subject to Terms and Conditions for Electronic Documents at [www.sgs.com/terms\\_e-document.htm](http://www.sgs.com/terms_e-document.htm). Attention is drawn to the limitation of liability, indemnification and jurisdiction issues defined therein. Any holder of this document is advised that information contained hereon reflects the Company's findings at the time of its intervention only and within the limits of Client's instructions, if any. The Company's sole responsibility is to its Client and this document does not exonerate parties to a transaction from exercising all their rights and obligations under the transaction documents. This document cannot be reproduced except in full, without prior written approval of the Company. Any unauthorized alteration, forgery or falsification of the content or appearance of this document is unlawful and offenders may be prosecuted to the fullest extent of the law.